A yellow truck-mounted drilling rig is shown against a dark background. A large, powerful splash of water is erupting from the rig, creating a massive, funnel-shaped cloud of water droplets that fills the upper half of the frame. The truck is yellow with blue and black accents, and the rig is also yellow. The truck has 'AMM' and '2010 12' on the front. The rig has 'HYDRAULIC OVERLIFT' and '2010 12' on it. The truck is parked on a white surface.

Perfect SOURCE – Powerful FORCE



**Trishul** Engineering

**Manufacturer & Exporter :**

DTH Rig Machine & Automobiles Fabrication Manufacturers  
Rig Machine Spares, Hydraulic Spares & Iron Item Merchant



## Company Profile....

**“Trishul engineering”** founded in 1992, under the leadership of our chairman Mr. B.M. Viramagama. Trishul engineering is a leading Manufacturer and Exporter of Water well drilling rigs. We have Certificates like ISO 9001:2008 and ISO 14001:2004. We have products of DTH Drilling Rigs, Combination (DTH + Mud) Drilling Rigs, DTH Drilling Rig having specially design Rod Lifter operated by Manual switching system, Best Compressor Fitting and all Hydraulics.

Trishul engineering expanded their export division, and have exported many Drilling rig Machines to various countries. We are Supplying Our Products in 8 states of India and Exporting in Nepal, Australia, United Arab Emirates (UAE) mainly in African countries like Sudan, Malawi, Kenya, Nigeria, Zambia, Tanzania and Ethiopia.

Trishul Engineering has an excellent infrastructure, our Research & Development Department is engaged in design and development, incorporating the latest trends in Rig Manufacturing DTH Drilling Rigs, Combination (DTH + Mud) Drilling Rigs, DTH Drilling Rig having specially design Rod Lifter operated by Manual switching system, Best Compressor Fitting and all Hydraulics.

Their dedication and combined experience allow us to innovate throughout the entire design and manufacturing process, in turn, creating the quality of drilling rig machine and solutions for our customers who have come to trust and Credit upon. Trishul engineering’s main objective is to become a world class supplier of specialized drilling products to cater the water, mining and construction industry.



## Our Export Market....



- Kenya
- Ethiopia
- Sudan
- Malawi
- UAE
- Angola
- Nigeria
- Tanzania

## History of Drilling....

### Well Drilling Technology :

A drilling rig is a machine that creates holes in the earth sub-surface. Drilling rigs can be massive structures housing equipment used to drill water wells, oil wells, or natural gas extraction wells, or they can be small enough to be moved manually by one person and are called augers. Drilling rigs can sample sub-surface mineral deposits, test rock, soil and groundwater physical properties, and also can be used to install sub-surface fabrications, such as underground utilities, instrumentation, tunnels or wells. Drilling rigs can be mobile equipment mounted on trucks, tracks or trailers, or more permanent land or marine-based structures (such as oil platforms, commonly called 'offshore oil rigs' even if they don't contain a drilling rig). The term "rig" therefore generally refers to the complex of equipment that is used to penetrate the surface of the Earth's crust.



Small to medium-sized drilling rigs are mobile, such as those used in mineral exploration drilling, blast-hole, water wells and environmental investigations. Larger rigs are capable of drilling through thousands of metres of the Earth's crust, using large "mud pumps" to circulate drilling mud (slurry) through the drill bit and up the casing annulus, for cooling and removing the "cuttings" while a well is drilled. Hoists in the rig can lift hundreds of tons of pipe. Other equipment can force acid or sand into reservoirs to facilitate extraction of the oil or natural gas; and in remote locations there can be permanent living accommodation and catering for crews (which may be more than a hundred). Marine rigs may operate thousands of miles distant from the supply base with infrequent crew rotation or cycle.

## Evolution of Drilling Technology....





## Product Range...

### TE DTH 350

- Drilling Type : DTH
- Normal Capacity : Drilling upto 350 mtr. (1200 feet) of 6½" bore using 4½" OD Drill rods
- Pull up force : 9000 Kg.
- Pull Down force : 6300 Kg.
- Top Head Rotary Drive : Max. 300 kg. mtr. torque
- Rotation : 0-160 rpm.
- On Board Compressor : 1100 cfm/400 psi



### TE DTH 700

- Drilling Type : DTH
- Normal Capacity : Drilling up to 700 mtr. (2000 feet) of 6½" bore using 4½" OD Drill rods
- Pull up force : 18265 Kg.
- Pull Down force : 12115 Kg.
- Top Head Rotary Drive : Max. 610 kg. mtr. torque
- Rotation : 0-160 rpm.
- Suitable Compressor : 1200 cfm/350 psi
- Additional Req. : Extra truck for Air Compressor & Drill rods



## TE DTH 1000

- Drilling Type : DTH
- Normal Capacity : Drilling up to 1000 mtr. (3000 feet) of 6½" bore using 4½" OD Drill rods
- Pull up force : 30,250 Kg.
- Pull Down force : 25,700 Kg.
- Top Head Rotary Drive : Max. 1150 kg. mtr. torque
- Rotation : 0-160 rpm.
- Suitable Compressor : 1500 cfm/400 psi
- Additional Req. : Extra truck for Air Compressor & Drill rods



## TE Combi 350

- Drilling Type : DTH with Rotary
- Drilling Capacity : Drilling up to 350 mtr. (1200 feet) of 6½" bore using 4½" OD Drill rods
- Pull up force : 9200 Kg.
- Pull Down force : 6300 Kg.
- Top Head Rotary Drive : Max. 300 kg. mtr. torque
- Rotation : 0-160 rpm.
- On Board Compressor : 1200 cfm/350 psi
- Mud Pump : 6x6 Head Hydraulic Motor Drive





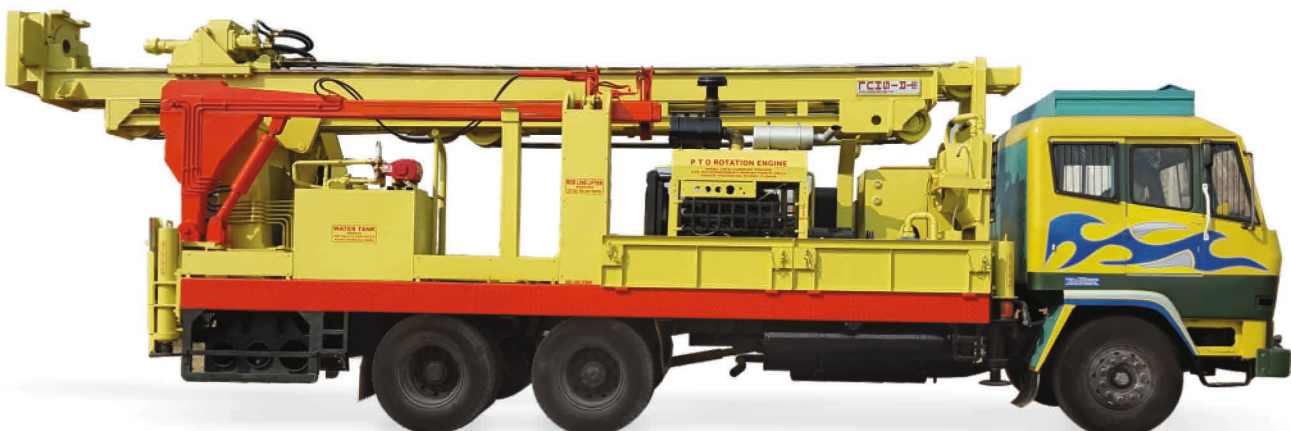
### TE Combi 600

- Drilling Type : DTH with Rotary
- Drilling Capacity : Drilling up to 600 mtr. (1800 feet) of 6½" bore using 4½" OD Drill rods
- Pull up force : 21400 Kg.
- Pull Down force : 14400 Kg.
- Top Head Rotary Drive : Max. 1030 kg. mtr. torque
- Rotation : 0-160 rpm.
- Suitable Compressor : 1500 cfm/400 psi
- Mud Pump : 8x6 Head Hydraulic Motor Drive
- Additional Req. : Extra truck for Air Compressor & Drill rods



### TE DTH With Hydraulic Rodlifter

- Drilling Type : DTH
- Normal Capacity : Drilling up to 1000 mtr. (3000 feet) of 6½" bore using 4½" OD Drill rods
- Pull up force : 30,250 Kg.
- Pull Down force : 25,700 Kg.
- Top Head Rotary Drive : Max. 1150 kg. mtr. torque
- Rotation : 0-160 rpm.
- Suitable Compressor : 1500 cfm/400 psi
- Additional Req. : Extra truck for Air Compressor & Drill rods



## Spares & Accessories...



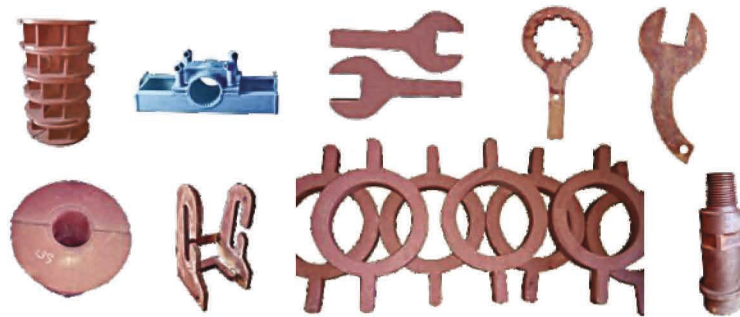
Hammer



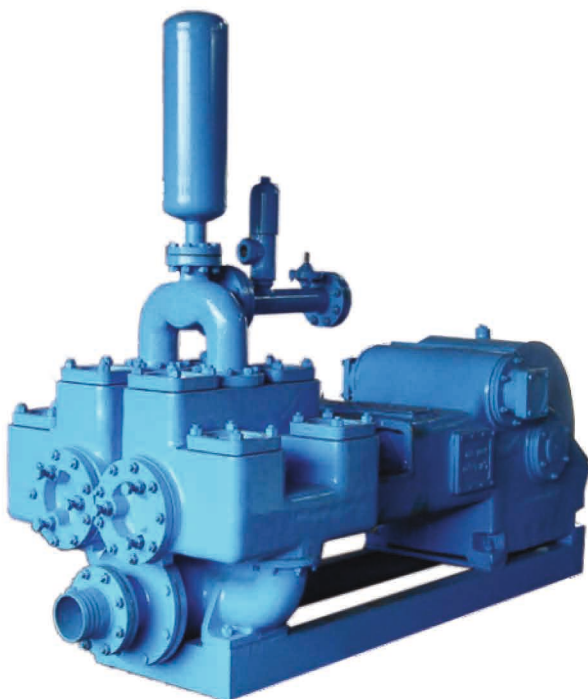
Button Bits



Hydraulic Hoses



Drilling Supporting Tools



Mud Pump



Drill Rods





**Nearest Airport :**

- Rajkot Airport 15 km from our Factory.
- 6 flights a day for Mumbai
- 2 flights a day for Delhi

**Nearest Port :**

- Mundra Port 200 km by road from Rajkot.



# Trishul Engineering

**Email :** [export@trishulrigs.com](mailto:export@trishulrigs.com)

**Web :** [www.trishulrigs.com](http://www.trishulrigs.com)

**Unit : 1**

Near Naz Furniture, Kothariya Solvent Railway Crossing,  
Gondal Road, Rajkot-360002(Gujarat) India.

**Mobile :** +91-99099 13411

**Unit : 2**

Opp. Getco Power house, Via. Kothariya Village, Dist. Rajkot,  
Village : PIPLANA(Lothda)-360002(Gujarat) India.

**Mobile :** +91-99099 13411